



Biennial Flight Review General Knowledge Test 6

Written Examination for a Sport Aviation Corp Part 149 Flight Crew Certificate Biennial Flight Review

Name & SAC Client Number _____

Date of BFR _____

Aircraft (Model & Regn) _____

For today's flight, you will be planning to fly from Tauranga to Thames. You will need an AIP Volume IV and a copy of 1:250 000 Visual Navigation Chart C3.

```
METAR NZTG 030230Z AUTO 02006KT 5000NDV -SHRA SCT008/// BKN012///  
17/15 Q1017=  
  
TAF NZTG 030107Z  
0219/0308 02005KT 10KM -RA SCT020 BKN030  
TEMPO 0300/0316 4000 RA BKN009  
2000FT WIND 05015KT  
  
TAURANGA (NZTG) :  
B4728/12 FROM: 02 NOV 2012 20:00 TO: 04 NOV 2010 20:00  
ALL GR RWY CLSD DUE SFC COND
```

1. What time range is the TAF report valid for?

2. The conditions current observed and forecast are indicative of what weather system?

3. Are the current weather conditions suitable for you to proceed with your VFR flight?

4. Tauranga is home to extensive glider and parachute activity. What symbols will be placed on the ground to indicate these activities are in progress?

5. What are the circuit directions for each of the runways at Tauranga. Which runway would you anticipate landing on today?

6. Which radio frequency would you use to familiarise yourself with weather and operational conditions at Tauranga Airport?

7. If you carry a 406Mhz Personal Locator Beacon, do you still need a transponder to fly in TM Airspace surrounding Tauranga?

8. You fill your aircraft with 60 litres of AVGAS fuel. How much will this weigh and what endurance would this give if your aircraft consumes 18 litres per hour?

9. The weather improves enough for you to fly to Thames. Tauranga Control Tower gives you the following clearance "Sierra Alpha Quebec, Line Up Runway 25, Cleared Matakana One Departure, Right Turn Approved". What actions should you take to comply with this clearance?

10. North of Matakana Island, what is the maximum height you may climb to and remain clear of controlled airspace?

11. Could you fly over the Waihi township to show your friend the Gold Mine situated in the middle of the township?

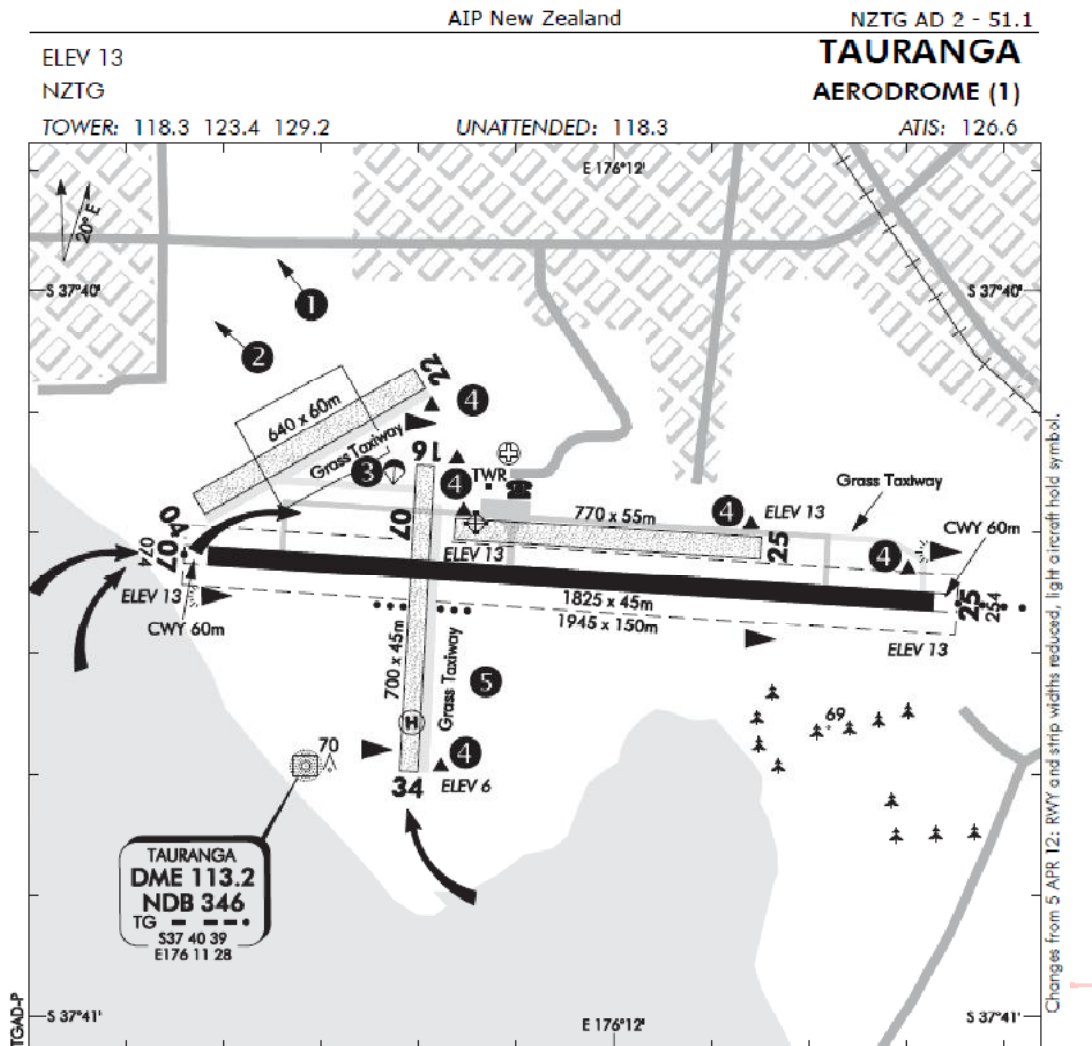
12. Estimate the Compass heading you would steer from Paeroa to Thames and the time this sector of the flight would take at a cruise speed of 85 knots?

13. Which radio frequency should you broadcast your intentions on as you join and land at Thames?

14. You elect to join overhead at Thames. Detail the radio call you would give once overhead Thames airfield and when you have established the active runway prior to commencing your descent

Extract from AIP New Zealand Volume IV

(extract only - not for operational use)



- ① Terrain rises to 762ft AMSL at 2.5NM northwest of aerodrome. By day aircraft may be operating within G271 Mount Maunganui without reference to Tauranga Tower.
- ② Five container cranes, up to 330ft AMSL, at 1-1.5NM.
- ③ Model aircraft flying may take place Sunday mornings prior to ATC opening watch.
- ④ Light aircraft holding positions marked by large white cones.
- ⑤ Simultaneous helicopter operations on grass RWY 16/34, parallel to and 165m south of sealed RWY 07/25, permitted in VFR conditions when ATC is on duty.
- 6. Circuit:

| | |
|--|---|
| Powered aircraft RWY 25, Gr RWY 16, 22, 25 — Left hand RWY 07, Gr RWY 04, 07, 34 — Right hand Microlights/Gyrocopters — 500ft AMSL All other aircraft — 1000ft AMSL | Glinters and tugs RWY 04 — Left hand RWY 22 — Right hand |
|--|---|

When ATC is on watch, unless otherwise instructed, circuit altitudes are:
- 7. Intensive gliding operations may take place particularly during weekends, Wednesday afternoons and public holidays; gliders and tugs use RWY 04/22.
- 8. Circuit training weekdays 0800 - 1800, weekends and public holidays 1000 - 1700, nights ECT - 2130.
- 9. No simulated EFATO off Gr RWY 07, 34 or 22.

(continued)

S 37 40 19 E 176 11 46

Effective: 20 SEP 12

© Civil Aviation Authority

TAURANGA AERODROME (1)