



Biennial Flight Review General Knowledge Test 5

Written Examination for a Sport Aviation Corp Part 149 Flight Crew Certificate Biennial Flight Review

Name & SAC Client Number _____

Date of BFR _____

Aircraft (Model & Regn) _____

For today's flight, you will be flying from Whangarei to Kaipara Flats and back again. You will need an AIP Volume IV and a copy of 1:250 000 Visual Navigation Chart C3. Below is a summary of weather reports and NOTAMS you obtained earlier. New Zealand is on Daylight Saving Time. You should plan the flight for an aircraft that cruises at 100 knots TAS and uses 18 litres/hour of fuel

```
METAR NZWR 182030Z AUTO VRB04KT 4000NDV -RA SCT003/// BKN004///  
16/15 Q1024=  
  
TAF NZWR 182022Z 1820/1908  
VRB05 3000 RA/BKN004  
FM1901 320/10KT 15KM -SHRA SCT015 BKN045  
  
WHANGAREI (NZWR) :  
A4528/10 FROM: 18 NOV 2010 20:00 TO: 21 NOV 2010 19:59  
GR RWY 14/32 CLSD DUE SFC COND
```

1. At what time was the above METAR Report issued at? _____

2. What is the earliest time you would expect the weather to be suitable for you to depart on your cross country flight and maintain VFR?

3. You wish to bring a passenger along for today's flight. Before you carry a passenger, what currency requirements must you meet?

4. With a lot of rain falling in recent days, the grass runway at Whangarei has been closed. In addition to the NOTAM, what markings would be placed on the runway to indicate this?

5. What safety equipment must you legally carry with you today for your flight?

6. What compass heading would you estimate you will need to steer for the leg from Whangarei to Kaipara Flats?

7. How much fuel would you need to carry for the entire return journey today?

8. With the rain cleared, you depart for Kaipara Flats. What is the maximum height you may operate in the Whangarei MBZ at without a transponder?

9. There is still some low cloud, and you decide to go south via the coast. Can you fly through the R100 Marsden Point area?

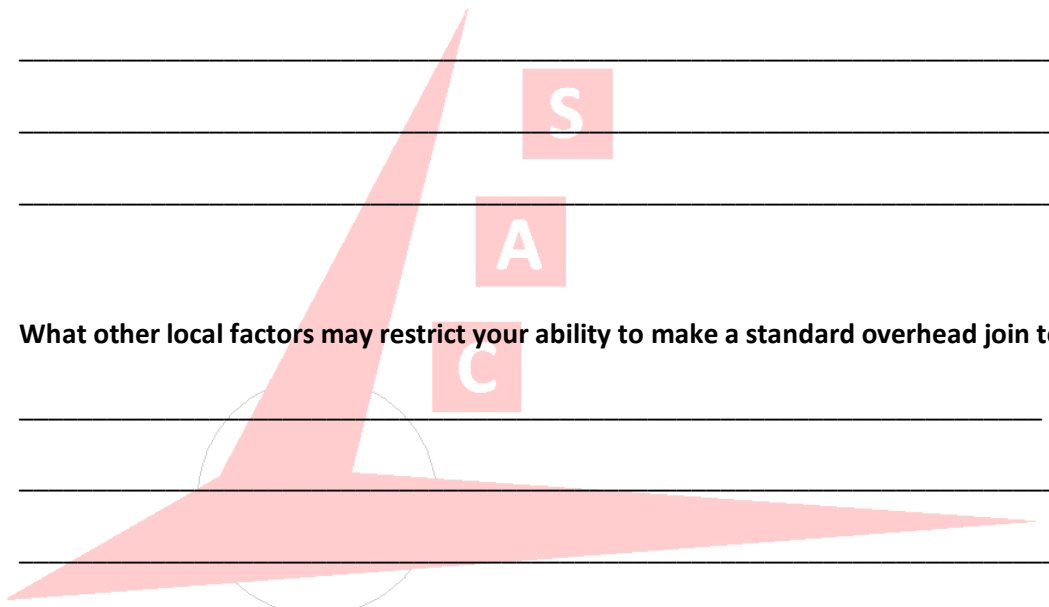
10. On your return from Kaipara Flats, what is the maximum height you could climb to and avoid controlled airspace. Secondly, what is the maximum height you would probably be able to fly at today given the weather and VFR cruising level rules?

11. You are nearing the edge of the Whangarei MBZ. What radio frequency should you use, and what general operating rules should you observe in this airspace?

12. What are the circuit directions for each of the runways at Whangarei. Which runway would you anticipate being in use upon your return?

13. On the attached Whangarei Aerodrome Plate, draw the procedure you would fly when making a standard overhead join upon returning from Kaipara Flats. Detail significant heights and positions of radio calls

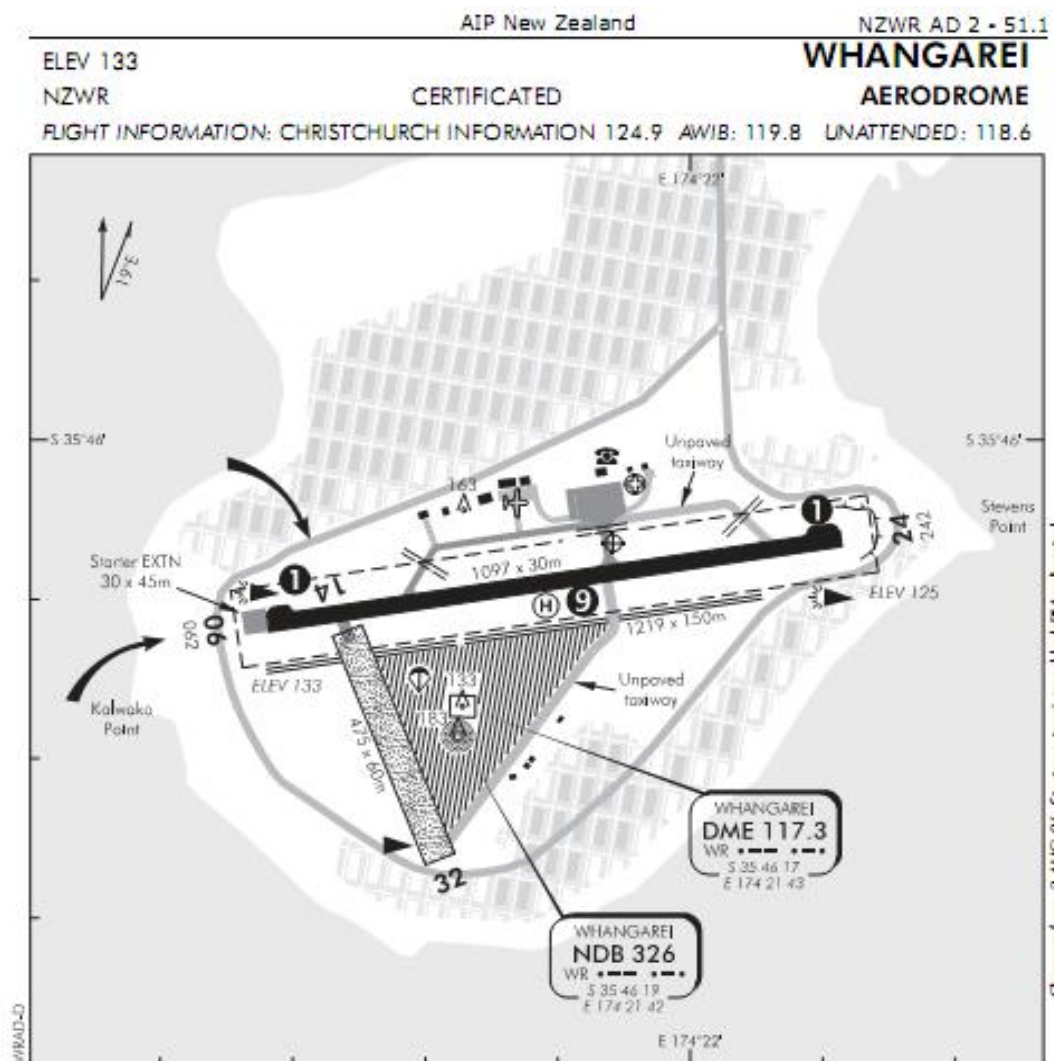
14. Detail the radio call you would give once overhead the airfield when you have established the active runway prior to commencing your descent



15. What other local factors may restrict your ability to make a standard overhead join today?

Extract from AIP New Zealand Volume IV

(extract only - not for operational use)



- 1. No holding in turning bays.
- 2. All aircraft operations are confined to defined runway and taxiway areas.
- 3. U-turns on paved runway by aircraft above 5700kg MCTOW are not permitted except in turning bays at runway ends.
- 4. Holding positions are marked by flush yellow concrete markers.
- 5. Grass taxiway is delineated by orange cone markers.
- 6. Runway lead-in light system (RLLS). Refer to page NZWR AD 2-46.1 (Vol. 3 IFR only).
- 7. Parking stands in front of terminal reserved for scheduled operators.
- 8. **CAUTION:** Bird hazard. Gulls shelter on aerodrome overnight. Gulls on runway and grass vectors throughout winter, particularly during and following rain.
- 9. Simultaneous operations from TLOF and runway not permitted.
- 10. Built-up areas around airport are noise sensitive. All approaches and departures (including helicopters) to be in line with runway vectors.
- 11. Airport staff available only between 0600 and 2000 NZST/NZDT.

S 35 46 06 E 174 21 54

Effective: 19 NOV 09

© Civil Aviation Authority

WHANGAREI
AERODROME